

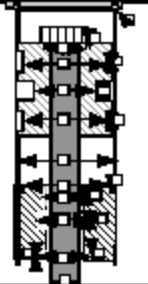
Information Sheet  
 Department:  
**H00**  
 Type:  
**FORM**  
 Date:  
**040326**  
 Code:

# Packing & Seals, Inc.

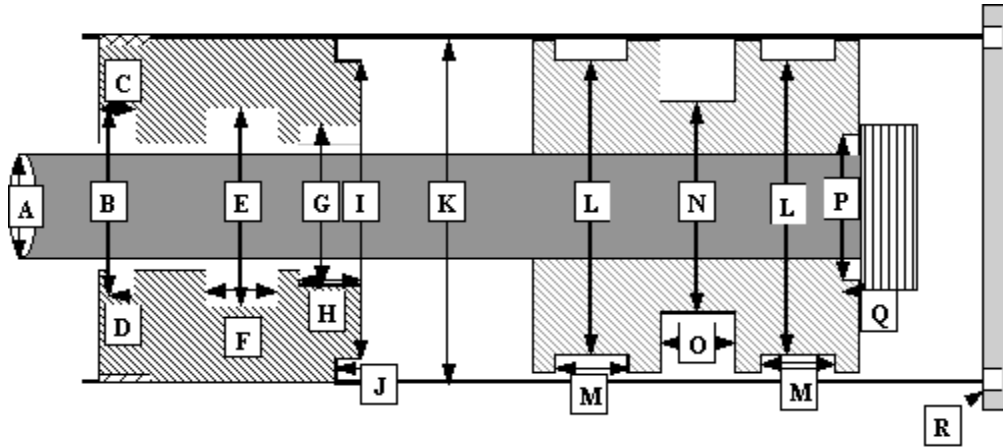
> Since 1973 <

**FLUID SEALING SOLUTIONS**  
 2602-K Transportation Ave.  
 National City, CA 91950-6892

National City (619) 474-8281    Nationwide (888) SEAL-PSI    FAX (619) 474-5911  
 www.packingandseals.com    E-mail: info@packingandseals.com



## DIMENSIONAL INFORMATION WORKSHEET



**REFERENCE LETTER FROM ABOVE**  
 ID=Inside diameter OD=Outside Diameter

**DIMENSION      PROFILE**

**ROD WIPER**

- A = Rod Diameter = Wiper Inside Diameter
- B = Groove Diameter of Wiper = Wiper Outside Diameter
- C = Groove Width = Wiper Height Press-In Style
- D = Groove Width = Wiper Step Height Snap-In Style

_____	_____
_____	_____
_____	_____
_____	_____

**ROD GLAND SEALS**

- A = Rod Diameter = Seal ID
- E = Rod Groove Diameter = Rod Seal OD
- F = Rod Groove Width = Nominal Rod Seal Height

_____	_____
_____	_____
_____	_____

**ROD WEAR BEARINGS**

- A = Rod Diameter = Rod Bearing ID
- G = Rod Bearing Groove Diameter = Rod Bearing OD
- H = Rod Bearing Groove Width = Rod Bearing Height

_____	_____
_____	_____
_____	_____

**PISTON WEAR BEARINGS**

- K = Cylinder Bore = Piston Wear Bearing OD
- L = Piston Wear Bearing Groove Diameter = Wear Bearing ID
- M = Wear Bearing Groove Width = Wear Bearing Height

_____	_____
_____	_____
_____	_____

**PISTON SEAL**

- K = Cylinder Bore = Piston Seal OD
- N = Piston Seal Groove Diameter = Piston Seal ID
- O = Piston Seal Groove Width = Nominal Piston Seal Height

_____	_____
_____	_____
_____	_____

**MISC. SEALS**

- K = Cylinder Bore = Gland Seal OD
- I = Rod Gland Groove Diameter = Gland Seal ID
- J = Rod Gland Groove Width = Gland Seal Nominal Height
- P = Groove Diameter I.D. Gasket = Piston ID Gasket OD
- Q = Groove Width Piston I.D. Gasket = Nominal Gasket Width
- R = Tube End Plate Seal Varies with Application

_____	_____
_____	_____
_____	_____
_____	_____
_____	_____